



Northwest Climate Hub
U.S. DEPARTMENT OF AGRICULTURE



May 2024 Newsletter

Featured Article



Reforestation Focuses on Seedlings Adapted to Future Climates

In this voice memo, Brian Kittler, lead of the Resilient Forest Program for American Forests, discusses his organization's use of the Seedlot Selection Tool and climate change vulnerability assessments. Both products were co-developed by the Northwest Climate Hub. The tool and assessment helped Brian and his team replant burned forests with the right seeds for future climates in Oregon and California. This is one in a series of voice memos celebrating the successes and contributions of the USDA Climate Hubs over that past 10 years.

**Northwest Climate Change
Vulnerability Assessments**

Seedlot Selection Tool



Two New Biochar Factsheets

Two new factsheets on biochar are available from the Forest Service Rocky Mountain Research Station and the Northwest Climate Hub. One factsheet focuses on soil restoration with biochar, and the other focuses on biochar for mine remediation. Check out these fact sheets and more on our biochar webpage.



Experimental Network for Assisted Migration and Establishment Silviculture (ENAMES)

This dashboard from the Pacific Northwest Research Station shows ENAMES sites, seed sources, data, site information, and links to complete site profiles. This tool is for anyone interested in climate-informed reforestation and ways to increase reforestation success.



Climate Change and Wildfire in Northwest Rangelands

May is Wildfire Awareness Month. Check out the Northwest Climate Hub webpage focused on the relationship between climate change and wildfire in Northwest rangelands.



Climate Change and Mental Health in the Northwest

May is also Mental Health Awareness Month! Check out this Northwest Climate Hub webpage to learn how climate change can affect mental health in our region, including impacts to particularly vulnerable groups.



Alaska Forest Health Highlights 2023

In this StoryMap from the USDA Forest Service, learn about key forest health issues in Alaska in 2023 and interact with survey maps and data. Highlights include information about spruce beetle and yellow-cedar decline.



Vulnerability of Alaska Native Tribes in the Chugach Region to Selected Climate and Nonclimate Stressors

This report assesses the vulnerability of seven Alaska Native tribes in the Chugach region to climate change and other stressors. This region includes Prince William Sound and the adjoining Kenai Peninsula.

Drought Update

Recent dry weather in southeast Alaska has continued, and abnormal dryness (D0 – yellow) remains in place. Oregon saw widespread improvements and removal of abnormal dryness and moderate drought (D1 – tan) in part due to the isolated precipitation and improved streamflow and soil moisture. These conditions were also seen in southwest Washington, where abnormal dryness was removed. Central Washington, however, missed out on any meaningful precipitation and saw temperatures of 4 to 8 degrees above normal, leading to abnormal dryness expansion. Short-term dryness continued in northwest and north-central Washington, especially in parts of the Cascade and Olympic ranges, where snow-water content and streamflow remained low, and moderate drought and abnormal dryness expanded. Drought conditions in Idaho have remained consistent.



National Integrated
Drought Information
System



CoCoRaHS Community Rain
Hail Snow Network



Condition Monitoring
Observer Reports

U.S. Drought Monitor USDA Northwest Climate Hub

May 14, 2024
(Released Thursday, May. 16, 2024)
Valid 8 a.m. EDT

Drought Conditions (Percent Area)

	None	D0-D4	D1-D4	D2-D4	D3-D4	D4
Current	88.91	11.09	3.64	0.87	0.02	0.00
Last Week 05-07-2024	85.40	14.60	4.10	0.96	0.02	0.00
3 Months Ago 02-13-2024	89.53	10.47	5.76	1.20	0.00	0.00
Start of Calendar Year 01-02-2024	84.63	15.37	5.68	1.00	0.00	0.00
Start of Water Year 09-26-2023	80.15	19.85	14.48	7.82	1.55	0.00
One Year Ago 05-16-2023	82.42	17.58	8.39	1.56	0.29	0.00

Intensity:

None	D2 Severe Drought
D0 Abnormally Dry	D3 Extreme Drought
D1 Moderate Drought	D4 Exceptional Drought

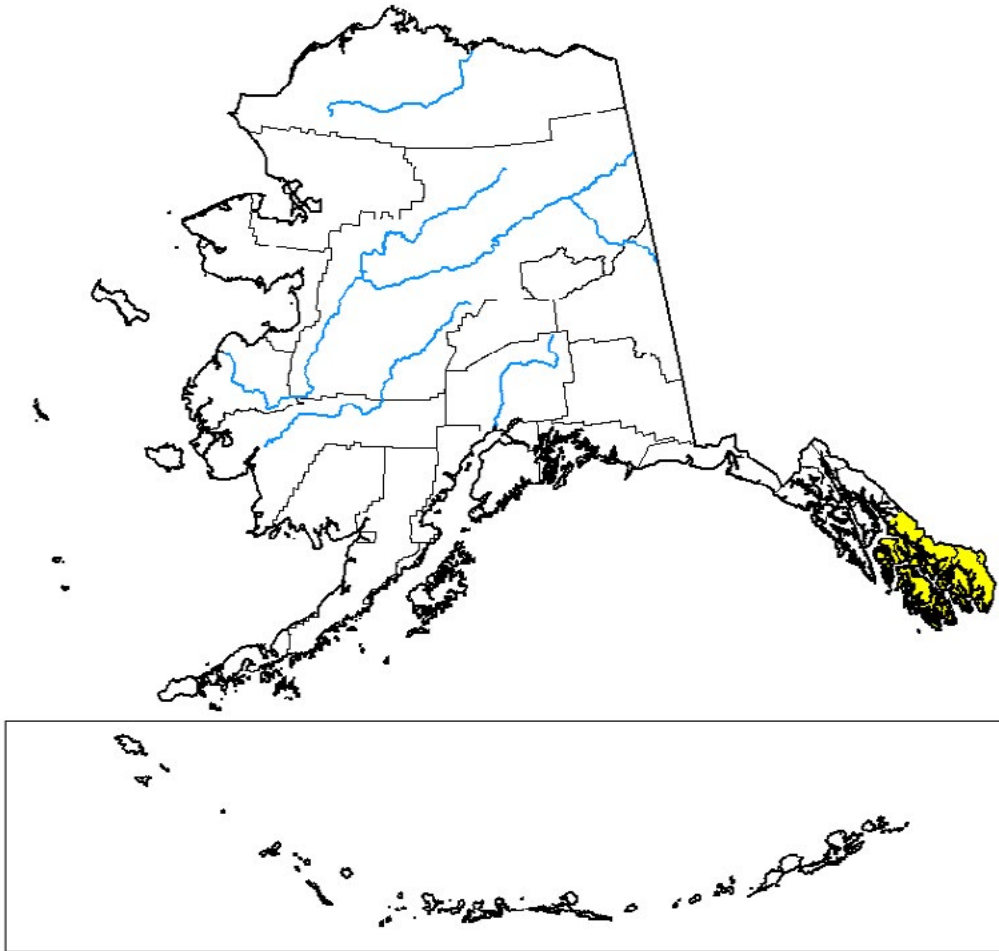
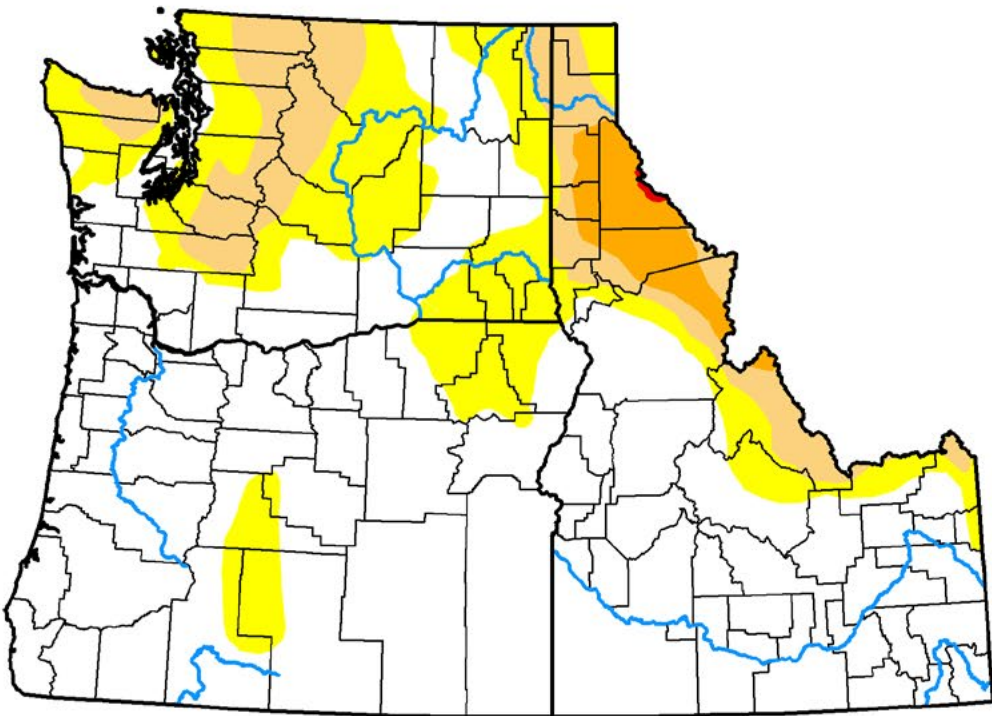
The Drought Monitor focuses on broad-scale conditions. Local conditions may vary. For more information on the Drought Monitor, go to <https://droughtmonitor.unl.edu/About.aspx>

Author:

Lindsay Johnson
National Drought Mitigation Center



droughtmonitor.unl.edu



Workshops and Conferences



NCA5 Northwest Regional Engagement Workshop & Networking Event, 22 May, Boise, Idaho.

Join authors of the Fifth National Climate Assessment (NCA5) and the Hazard and Climate Resilience Institute at Boise State University for an in-person workshop to discuss climate change in the Northwest. The program will include presentations by authors from the Northwest, Complex Systems, Transportation, and Social Systems and Justice chapters, leadership of the U.S. Global Change Research Program, and regional practitioners.



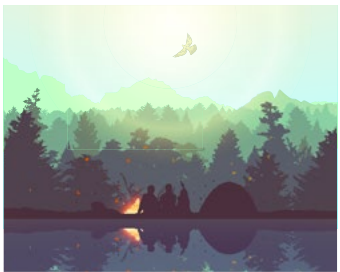
Pacific Northwest Society for Range Management Summer Meeting and Tour, 29–31 May, Chewelah, Washington.

This workshop will cover topics including forest grazing, cover crop grazing, silvopasture, hay production, seedstock beef production, and water quality. The workshop includes a ranch tour. Many of the discussed practices can help mitigate greenhouse gas emissions and improve climate adaptability in rangelands.



Biennial Sage and Sharp-tailed Grouse Workshop, 5–8 August, Wenatchee, Washington.

This workshop will provide an opportunity for scientists, managers, and students to share results of their latest research, activities related to management and conservation, and strategies for dealing with the many issues impacting sage-grouse and Columbian sharp-tailed grouse in western North America.



2024 Tribal Climate Camp, 25–30 August, Corbett, Oregon.

The overall goal of this camp is to build the capacity of tribal leader teams to address climate change and associated economic, social, cultural, regulatory, and technological trends and impacts within their tribes, between tribes, and with other governments, through strategic alliances with partners across Indian Country and globally. **Applications are accepted through 1 June.**



National Tribal and Indigenous Climate Conference, 9–12 September, Anchorage, Alaska.

This event will convene knowledge holders on climate change and resilience efforts with an emphasis on the intersection, inclusion, and honoring of Traditional and Indigenous Knowledges. All who are interested in participating or attending are invited to listen, learn, and share.

Webinars



Alaska Climate Outlook Briefing, 17 May, 12pm AKDT

This webinar will review recent and current climate conditions around Alaska, discuss forecasting tools, and conclude with the Climate Prediction Center's forecast for June 2024 and the summer season. Join to learn what has happened and what may be in store with Alaska's seasonal climate.



Backyard Agroforestry: Sustainable Food Production in a Changing Climate, 20 May, 6pm PDT

This presentation from a USDA Climate Hubs fellow will discuss different types of agroforestry practices, how different practices can be applied in smaller production areas, ecological design principles to consider, and steps for starting an agroforestry system in your area.



First Friday All Climate Change Talks (FFACCTs), 7 June and the first Friday of every month, 10am PDT.

FFACCTs is a monthly webinar series organized by the USDA Climate Hubs and Forest Service Research and Development that features presentations from USDA scientists and practitioners. May's webinar is "Identifying and mapping climatically stable macro-and microrefugia for wildlife in New Mexico," presented by Megan Friggens from the Forest Service Rocky Mountain Research Station.



Pacific Northwest Drought Early Warning System June Webinar, 24 June, 11am PDT.

This webinar will provide timely information on current and developing drought conditions in the region, and climatic events like El Niño. Speakers will also discuss the impacts of these conditions on issues such as wildfires, floods, disruption to water supply and ecosystems, as well as impacts to affected industries like agriculture, tourism, and public health.



Funding

May



Grazing Lands Conservation Initiative
NRCS is investing in partnerships that expand access to conservation technical assistance for livestock producers and increase the use of conservation practices on grazing lands. These practices include climate-smart agriculture and forestry practices and principles. **Apply by 26 May.**

June



The 2024 Bullitt Prize
This prize awards \$100,000 to a conservation and environmental justice leader or group working on a project or action to address a conservation or environmental justice issue in Washington. Applicants must be 35 years of age or younger, from an underrepresented group, from Washington state or implementing work that impacts Washington, and have demonstrated leadership that advances the environmental movement. **Apply by 1 June.**



Matching Awards Program (MAP): Connecting People to Forests
This National Forest Foundation program provides funds for projects that directly benefit America’s National Forests and Grasslands. MAP pairs federal funds provided through a cooperative agreement with the USDA Forest Service with non-federal dollars raised by award recipients. Program goals are to create lasting change that will allow all communities, especially underserved communities, opportunities to benefit from activities on National Forest System lands or adjacent public lands. **Apply by 21 June.**

July



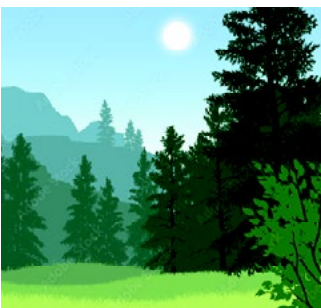
Regional Conservation Partnership Program
\$1.5 billion is available to fund projects for the Regional Conservation Partnership Program for fiscal year 2024. This program with the USDA Natural Resource Conservation Service will help farmers, ranchers, and forest landowners adopt and expand conservation strategies to enhance natural resources while tackling the climate crisis. These projects in turn can save farmers money, create new revenue streams, and increase productivity. **Apply by 2 July.**

July continued



Conservation Reserve Program
This is a USDA Farm Service Agency’s (FSA) voluntary program that contracts with agricultural producers so that environmentally sensitive agricultural land is devoted to conservation benefits. Program participants establish long-term, resource-conserving vegetative species, such as approved grasses or trees to control soil erosion, improve the water quality and enhance wildlife habitat. In return, FSA provides participants with annual rental payments and cost-share assistance. **Contact the FSA at your local USDA Service Center by 31 July.**

August



Forest Landowner Support
These USDA Forest Service grants provide competitive opportunities to entities and organizations for delivering technical and financial assistance to private forest landowners, including tribes, underserved landowners, and smaller-acreage landowners. Proposals are sought in two areas: 1) to support the participation of underserved landowners and landowners owning less than 2,500 acres in emerging private markets for climate mitigation or forest resilience; 2) to support tribal access to emerging private markets for forest resilience or climate mitigation. **Apply by 21 August.**

September



Rural Energy for America Program Renewable Energy Systems & Energy Efficiency Improvement Guaranteed Loans & Grants
This program provides loan financing and grant funding to agricultural producers and rural small businesses for renewable energy systems, or to make energy efficiency improvements. Funds may be used for the purchase and installation of renewable energy systems, or for the purchase, installation, and construction of energy efficiency improvements. Agricultural producers may apply for new energy efficient equipment and new system loans for agricultural production and processing. **Apply by 30 September.**

Ongoing



Agriculture and Food Research Initiative Competitive Grants Program Foundational and Applied Science Request for Applications
This program provides funding for fundamental and applied research, education, and extension projects in the food and agricultural sciences. The goal of this program is to invest in agricultural production research, education, and extension projects for more sustainable, productive, and economically viable plant and animal production systems. **Apply by 14 November.**

Extension, Education & USDA Climate Hubs Partnership (page 100)
This program area priority will support projects that provide effective, translatable, and scalable approaches to address climate change through regional partnerships including the USDA Climate Hubs. The goal of this program is to stimulate and catalyze cross-cutting, and interdisciplinary work among scientists and stakeholders. **Apply by 5 September 2pm PDT.**